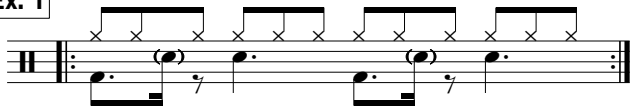


DEVELOPING 12/8 BLUES: ADDING GHOST NOTES

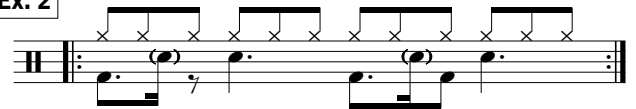
Adding **Ghost Notes** to your grooves is a good way to make them sound more interesting and to add some **dynamics**. We are going to focus on adding them in two places in the bar: within beats **1 and 3** and within beats **2 and 4**.

GHOST NOTES WITHIN BEATS 1 AND 3

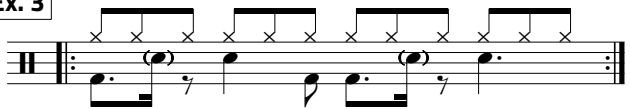
Ex. 1



Ex. 2



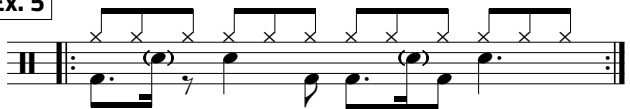
Ex. 3



Ex. 4



Ex. 5



Ex. 6



GHOST NOTES WITHIN BEATS 2 AND 4

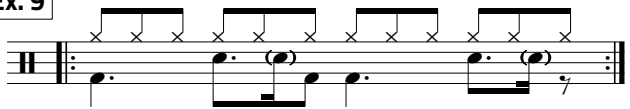
Ex. 7



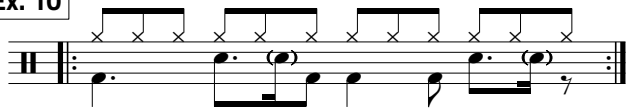
Ex. 8



Ex. 9



Ex. 10



Ex. 11



Ex. 12

